

Applies to: Tinytag LAN Data Loggers

Introduction

This document is a guide to installing and using Tinytag LAN data loggers with the standard version of the Tinytag Explorer software.

If you wish to use the device as part of a Tinytag Connect system, please see the Tinytag Connect User Manual.

A copy of this manual can be found on the Tinytag Explorer CD or downloaded from:

www.tinytag.info

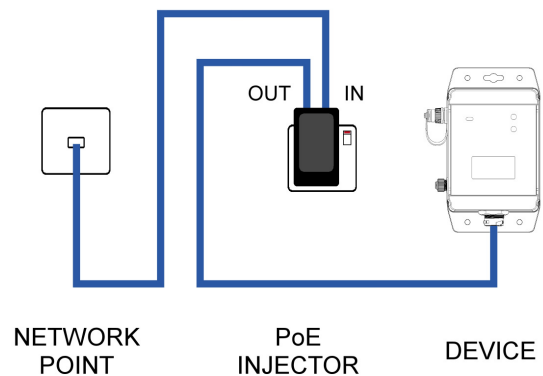
To use a LAN data logger, you need to be running Tinytag Explorer version 5.0 or above.

To upgrade to the current version of the software, go to:

www.tinytag.info/support

Hardware Setup

Ethernet receivers and LAN loggers are Power over Ethernet (PoE) devices. If a PoE plug-in injector is supplied, the device should be connected up using Ethernet cables (not supplied) as shown below:



Once connected, turn the PoE injector on.

Locate and make a note of the MAC address on the back of the device being installed, this will be needed later.

If the device is being used in a location where moisture or dust is present, the supplied waterproof RJ45 shroud should be fitted over the Ethernet connection.



To fit this, thread the Ethernet cable through the shroud, plug the cable into the device and then screw the shroud into the device.

Software Setup

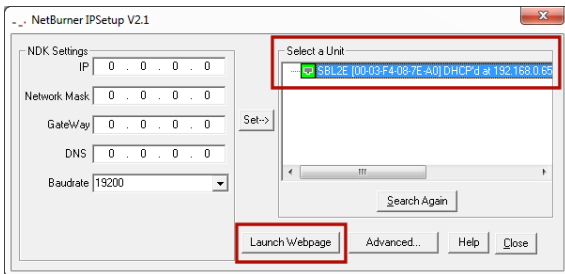
On the computer the loggers are going to be used on:

Install and activate Tinytag Explorer as described in the software's Quick Start Guide.

Browse the Tinytag Explorer CD and locate the LAN folder.

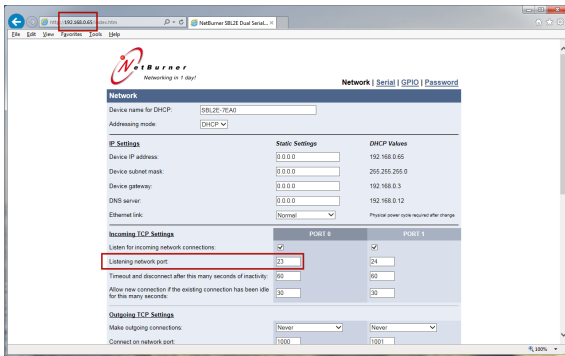
Run the program **VirtualCommPort.exe** and follow the instructions in the onscreen prompts.

Run the program **IPsetup.exe**. Devices are listed by their MAC address in the **Select a Unit** section.

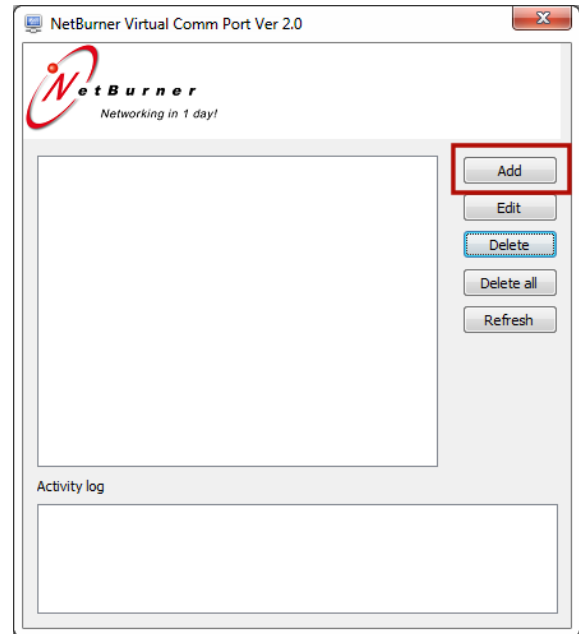


Highlight the required device and click on the **Launch Webpage** button.

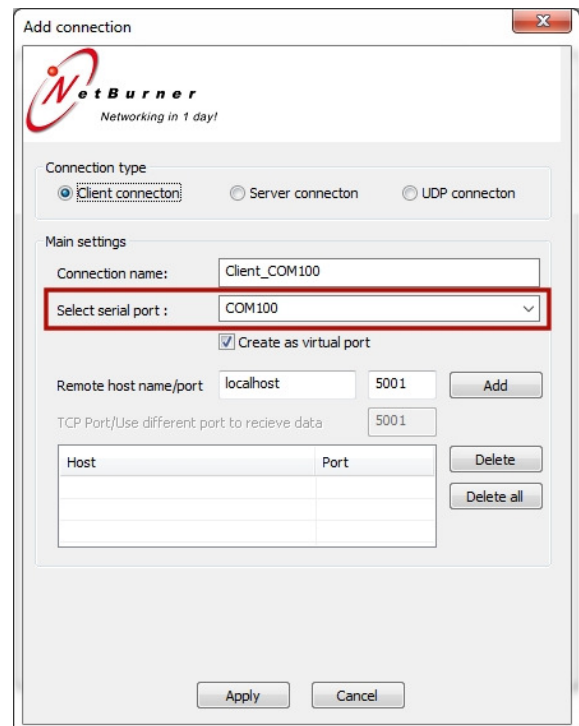
Make a note of the IP address of the device (from the URL of the web page) and the **Listening network port** number for **PORT 0**.



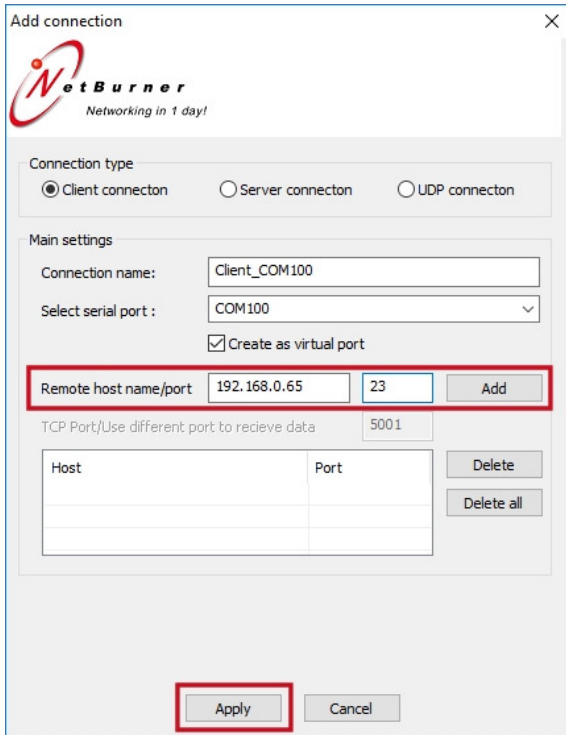
Run the Virtual Comm Port software (this is called **NB Virtual Comm Port** and can be found on the Windows Start Menu under **NetBurner NNDK**) and click **Add**.



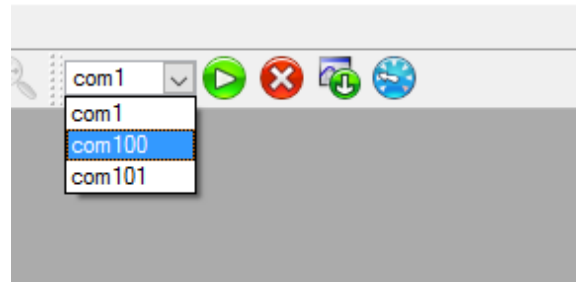
Set **Select serial port** to COM100 (if installing more than one device, increment the port number for each successive device used).



In the **Remote host name/port** fields type the IP address of the Ethernet device and the Listening network port number (as previously determined) and click **Add** and **Apply**. The device is now ready to use.

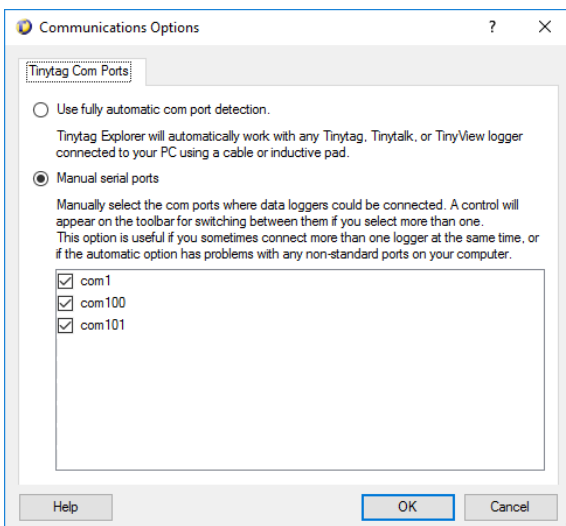


On the Tinytag Explorer toolbar, you will now see a new drop down menu.



Select the device you wish to work with from this menu.

In Tinytag Explorer, go to **Options** and **Communication Options**, select the **Manual serial ports** option and then the port numbers as previously configured.



Initial Setup

LAN loggers will turn on automatically when connected to a PoE supply (they can also be turned on manually by pressing and holding the Mute button on the logger briefly).

As soon as a logger is turned on, it will start recording (as supplied, this will be on a default logging interval of 10 minutes).



To ensure the logger is set with the correct time and date, start the logger recording using Tinytag Explorer.

Further instructions on how to work with the logger can be found in the Tinytag Explorer Quick Start Guide and in the software's Help file (go to Help and Contents to open this).

Further Information

Further information on Tinytag products, including data sheets and manuals, can be found on our web site at:

www.tinytag.info

If you should have any further questions, please contact your supplier or:

Gemini Technical Support

t: +44 (0)1243 813009

e: help@tinytag.info